

CIRCULAR SIGHTGLASSES

M Series LW and PLF

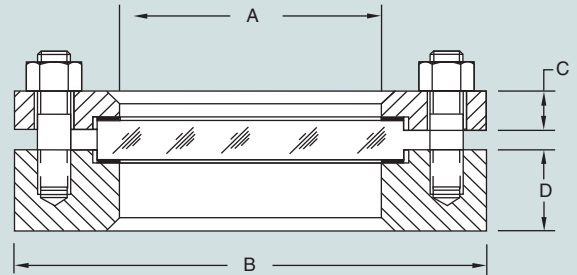
LIGHTWEIGHT CIRCULAR SIGHTGLASSES—SERIES LW

Series LW Weld Pad Connection

Series LW sightglasses offer economical viewing for low pressure Non-ASME code stamped vessels. Available with nominal viewing diameters from 1^{3/4}" to 8^{13/16}", these sightglasses provide lower cost viewing for those less severe applications. Sightglass can be provided with a Series MSL illuminator to make observations easily and quickly.

Specifications

- Available in carbon steel, 304L, and 316L stainless steel construction.
- Sightglasses are rated standard for 50 PSIG (3.4 Barg) pressure at 300°F (149°C) temperature with a soda lime lens. Tempered borosilicate lens material is available for operating temperatures up to 500°F (260°C).
- Standard sightglass seal gasket is neoprene. Teflon®, Viton®, EPDM, and silicone rubber seal gaskets are available from stock.



Size	A		B		C		D		APPROX. WEIGHT	
	Inches	MM	Inches	MM	Inches	MM	Inches	MM	LBS	KGS
2"	1 ^{3/4}	44	4	102	1/2	13	3/4	19	5	3
2 ^{1/2} "	2 ^{3/8}	60	5	127	1/2	13	3/4	19	7	3
3"	2 ^{3/4}	70	5 ^{1/2}	140	5/8	16	3/4	19	9	4
4"	3 ^{1/4}	95	7	178	3/4	19	7/8	22	15	7
5"	4 ^{3/4}	121	8	203	3/4	19	7/8	22	19	9
6"	5 ^{1/2}	140	8 ^{3/4}	222	7/8	22	1	25	25	11
7"	6	152	9 ^{3/4}	248	7/8	22	1	25	29	13
8"	7	178	10 ^{3/4}	273	7/8	22	1 ^{1/4}	32	37	17
9"	8 ^{13/16}	224	12 ^{3/4}	324	1	25	1 ^{1/4}	32	47	21



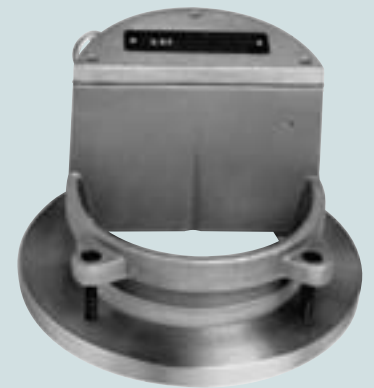
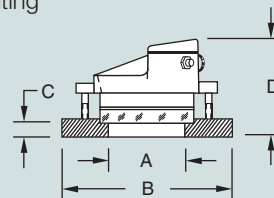
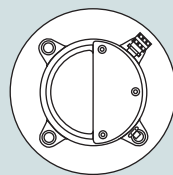
COMBINATION LIGHT/SIGHTGLASS FOR LOW PRESSURE APPLICATIONS—SERIES PLF

Series PLF Combination Light/Sightglass

The Series PLF Light/Sightglasses are very economical and popular units for baghouses, electrostatic precipitators, ductwork, and many other low pressure applications. The unit utilizes a thin lower flange with the Series PL lighting fixtures supporting the lens and seal gasket.

Specifications

- Lower flange is available in carbon steel, 304L, and 316L stainless steel construction.
- Sightglasses are rated standard for 7 PSIG (0.5 Barg) pressure at 300°F (149°C) temperature.
- Standard sightglass seal gasket is neoprene. Teflon, Viton, EPDM, and silicone rubber seal gaskets are available from stock.
- The Series PLF is available with a Type I window wiper.



Size	A		B		C		D		APPROX. WEIGHT	
	Inches	MM	Inches	MM	Inches	MM	Inches	MM	LBS	KGS
PLF-125	4	102	7 ^{1/2}	191	1/2	13	5 ^{1/2}	140	5	4
PLF-150	5	127	9	229	1/2	13	5 ^{1/2}	140	13	6
PLF-175	6	152	10	254	1/2	13	5 ^{1/2}	140	15	7