

2 7/8"
(73 mm)

2 3/8"
(60 mm)

SPECIAL FEATURES FOR SIGHTGLASSES

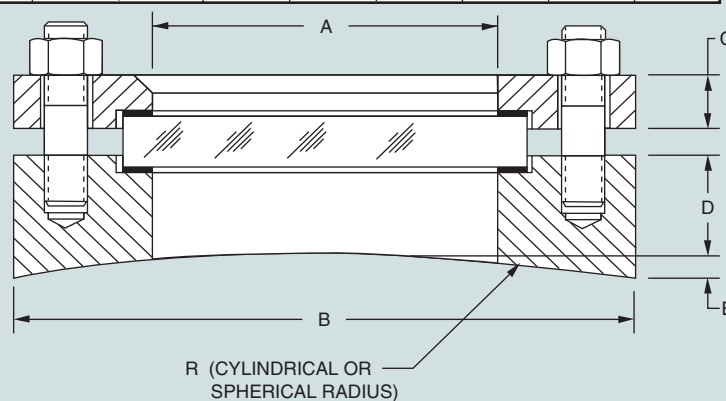
Series NW

CURVED SIGHTGLASS

The lower flange of the Series NW sightglass can be provided with a cylindrical or spherical curve to match the vessel or pipe it is being welded to. This eliminates the need for expensive saddles or special nozzles.

$$E=R-\sqrt{R^2-(B/2)^2}$$

Size	A		B		C		D	
	Inches	MM	Inches	MM	Inches	MM	Inches	MM
NW50-R	3 1/4	83	7	178	3/4	19	1 3/16	30
NW80-R	4	102	7 1/2	191	3/4	19	1 3/16	30
NW100-R	5	127	9	229	3/4	19	1 3/16	30
NW125-R	6	152	10	254	3/4	19	1 7/16	37
NW150-R	6 7/8	175	11	279	3/4	19	1 7/16	37
NW200-R	8 13/16	224	13 1/2	343	13/16	21	1 7/16	37

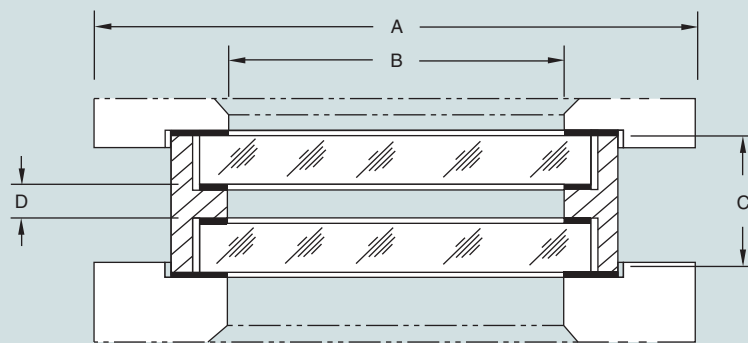


DOUBLE WINDOW SIGHTGLASS

The double window assembly offers the user an extra layer of reliability by controlling the factors which cause a lens to fail.

If a lens fails, the cause can, in most instances, be traced to one or a combination of the following factors: a stress concentration, thermal stress or shock, erosion or corrosion, and mechanical damage. The double window design provides extra protection against these causes of failure.

All sizes except NW150-DW and NW200-DW are rated standard for 150 PSIG (10.3 Barg) pressure and full vacuum at 300°F (149°C) temperature. NW150-DW and NW200-DW are rated for 125 PSIG (8.6 Barg) pressure at 300°F (149°C) temperature. Higher pressure and temperature ratings are available upon request.



Size	A		B		C		D	
	Inches	MM	Inches	MM	Inches	MM	Inches	MM
NW50-DW	4 3/8	111	3 1/4	83	1 7/8	48	3/8	10
NW80-DW	5 1/16	129	4	102	1 7/8	48	3/8	10
NW100-DW	6 3/8	162	5	127	1 15/16	49	7/16	11
NW125-DW	7 3/8	187	6	152	1 15/16	49	7/16	11
NW150-DW	8 3/8	213	6 7/8	175	2	51	1/2	13
NW200-DW	10 7/16	265	8 13/16	224	2 3/8	60	1/2	13



SIGHTGLASSES