

2 7/8"
(73 mm)

4"
(102mm)

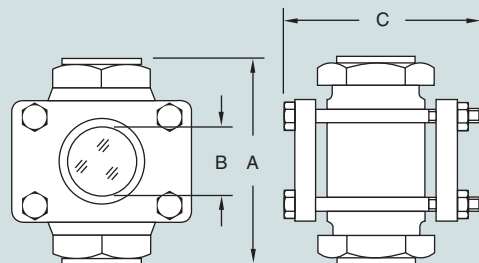
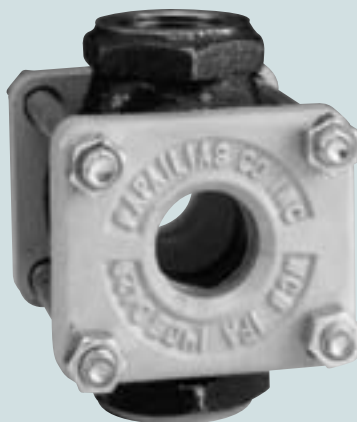
4"
(102mm)

SIGHT FLOW INDICATORS

MA Series FIS and FIF

SERIES FIS

Series FIS sight flow indicators, provided with NPT threaded ends per ANSI B2.1, offers inline on-the-spot viewing of a pipeline's contents. Series FIS may be configured with flapper, drip tube or rotary flow indicators. Options include socket weld and silver brazing connections and double window assemblies. Rating: 150 PSIG (10.3 Barg). Full ANSI pressure Class 150 rating available.



STANDARD MATERIALS OF CONSTRUCTION FOR SERIES FIS AND SERIES FIF

BODY MATERIAL: Bronze, carbon steel or 316 stainless steel

LENS RETAINER MATERIAL: Carbon steel or ductile iron

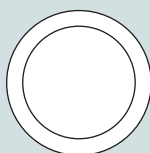
FASTENER MATERIAL: Carbon steel

LENS MATERIAL: Borosilicate glass

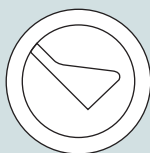
GASKET MATERIAL: Neoprene or Teflon®

Note: Other materials available upon request. Consult factory for details.

Size	A		B		C		APPROX. WEIGHT	
	Inches	MM	Inches	MM	Inches	MM	LBS	KGS
1/2"	3 3/4	95	1 1/8	29	3 11/16	94	4	2
3/4"	3 3/4	95	1 1/8	29	3 11/16	94	4	2
1"	4 1/4	108	1 1/8	29	4 1/4	108	6	3
1 1/4"	5 1/2	140	1 3/4	44	5 7/8	149	12	5
1 1/2"	5 1/2	140	1 3/4	44	5 7/8	149	12	5
1"	6 1/4	159	2 1/4	57	6 7/8	175	18	8



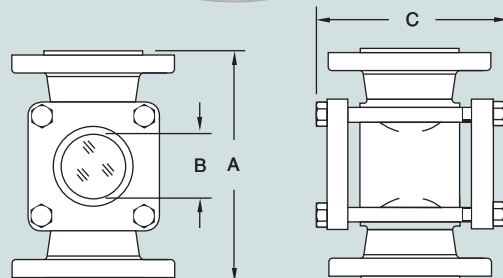
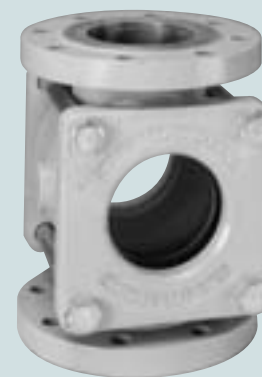
NO INDICATOR



FLAPPER INDICATOR

SERIES FIF

Series FIF sight flow indicators, provided with flanged ends per ANSI B16.5 and B16.24, offers inline on-the-spot viewing of a pipeline's contents. Series FIF may be configured with flapper, drip tube or rotary flow indicators. Options include DIN flange connections and double window assemblies. Rating: 150 PSIG (10.3 Barg). Full ANSI pressure Class 150 rating available.



Size	A		B		C		APPROX. WEIGHT	
	Inches	MM	Inches	MM	Inches	MM	LBS	KGS
1/2"	4 5/8	117	1 1/8	29	3 11/16	94	4	2
3/4"	4 5/8	117	1 1/8	29	3 11/16	94	4	2
1"	5 5/8	143	1 1/8	29	4 1/4	108	6	3
1 1/2"	6 1/2	165	1 3/4	44	5 7/8	149	12	5
2"	7 7/8	200	2 1/4	57	6 7/8	175	18	8
2 1/2"	9 3/8	238	3 1/4	83	8 15/16	227	44	20
3"	9 3/8	238	3 1/4	83	8 15/16	227	44	20
4"	11	279	4 1/4	108	10 1/2	267	67	30
6"	14 1/4	362	6 7/8	175	13 3/4	349	120	55
8"	16 1/8	410	7	178	15 5/8	397	230	105

*Bronze units are supplied with flat face flanges; reduce A dimension 1/8".