



LIGHTING FOR NONHAZARDOUS LOCATIONS

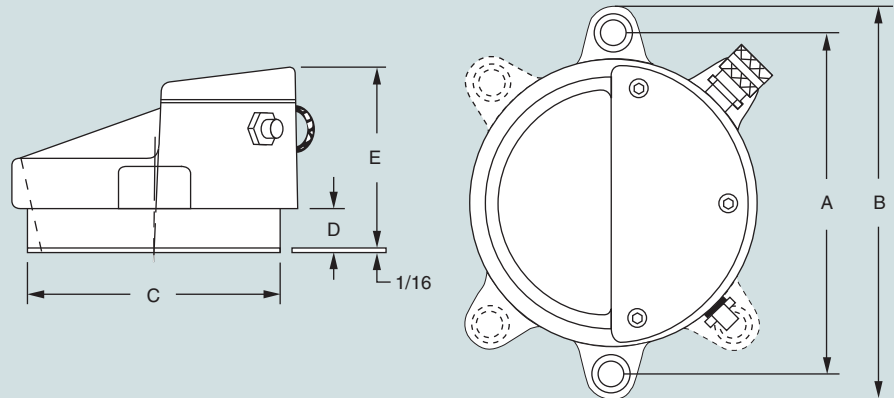
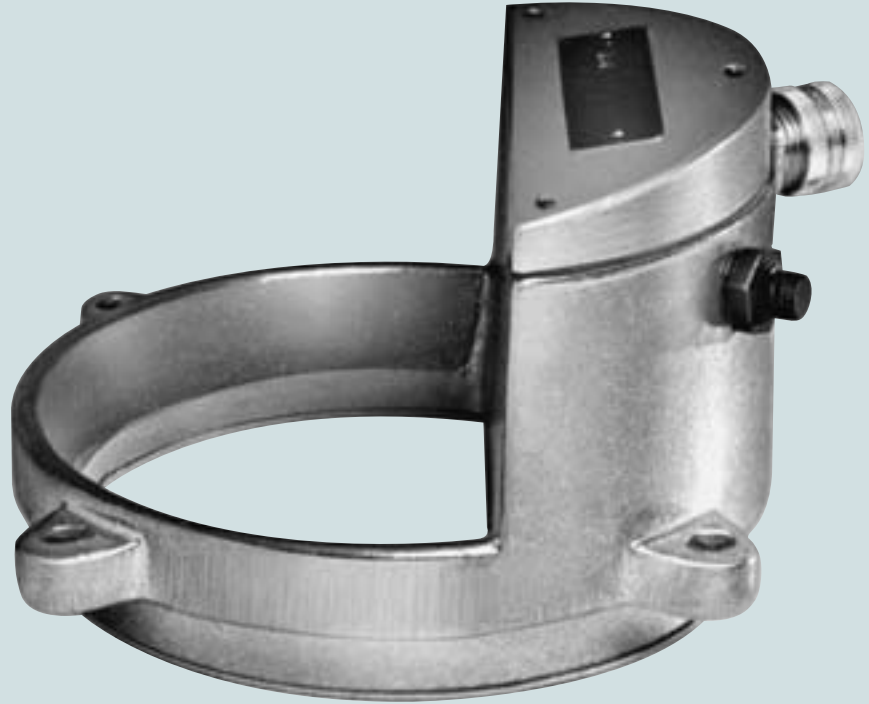
Series PL

SERIES PL

The UL-1571 Listed Series PL lighting units are mounted on the upper flange of our circular sightglasses. Combined, they offer glare-free illumination of the interior of vessels, tanks, hoppers, silos, mixers, and other normally enclosed containers in nonhazardous locations. The Series PL lighting units described on this page can also be mounted on existing sightglass installations having the same viewing diameter.

FEATURES

- High intensity halogen lamp provides bright illumination. Approximate lumens for 24V/20W: 350 and 115V/100W: 1800.
- Built-in momentary on/off switch for energy savings and increased lamp life.
- Lighting units mount to upper sightglass flange, completely independent of process pressure/vacuum.
- Dust-tight and watertight enclosure.
- Cast aluminum housing.



Size	SIGHTGLASS VIEW DIAMETER		VOLTAGE	WATTS	A		BOLT ORIENTATION	BOLT SIZE		B		C		D		E		APPROX. WEIGHT	
	Inches	MM			Inches	MM		Inches	MM	Inches	MM	Inches	MM	Inches	MM	Inches	MM	LBS	KGS
PL-80	3 ¹ / ₄	83	24	20	4 ¹¹ / ₆₄	106	2 @ 180°	1/4	6	4 ¹³ / ₁₆	122	3 ¹ / ₈	79	5/8	16	2 ⁷ / ₁₆	62	2	1
PL-100	4	102	115	100	5 ¹ / ₃₂	128	2 @ 180°	1/4	6	5 ¹³ / ₁₆	148	3 ⁷ / ₈	98	5/8	16	4 ⁵ / ₁₆	110	2	1
PL-125	5	127	115	100	6 ³ / ₁₆	157	4 @ 90°	1/4	6	6 ¹⁵ / ₁₆	176	4 ⁷ / ₈	124	5/8	16	4 ⁵ / ₁₆	110	2	1
PL-150	6	152	115	100	7 ¹¹ / ₆₄	182	4 @ 90°	1/4	6	8 ¹ / ₁₆	205	5 ⁷ / ₈	149	5/8	16	4 ⁵ / ₁₆	110	3	1
PL-175	6 ⁷ / ₈	175	115	100	8 ¹ / ₄	210	4 @ 90°	5/16	8	9 ³ / ₁₆	233	6 ¹³ / ₁₆	173	5/8	16	4 ⁵ / ₁₆	110	4	2
PL-225	8 ¹³ / ₁₆	224	115	100	10 ⁵ / ₈	270	4 @ 90°	5/16	8	11 ¹ / ₂	292	8 ¹¹ / ₁₆	221	1 ¹ / ₁₆	17	4 ⁵ / ₁₆	110	4	2