

2 7/8"  
(73 mm)

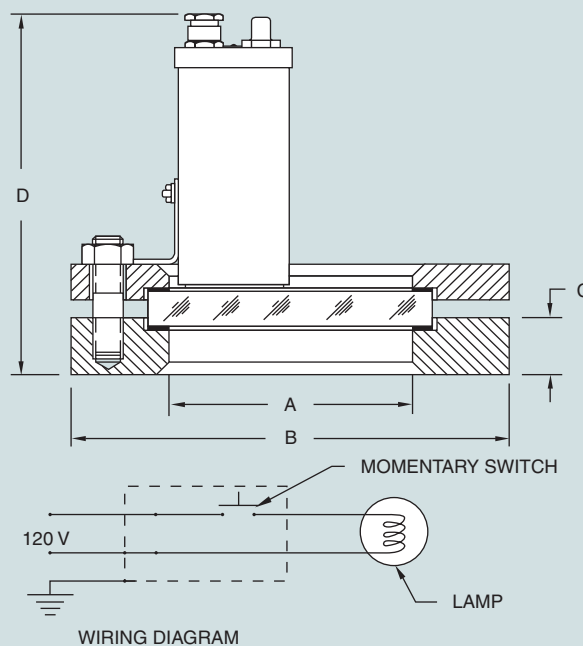
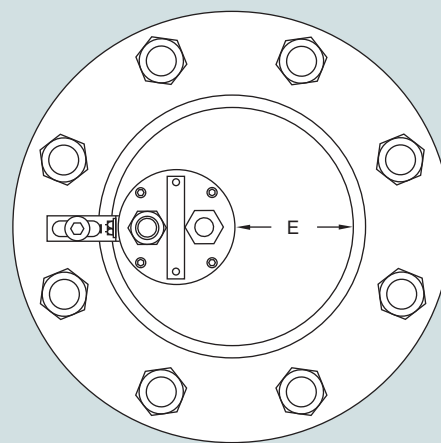
2 3/8"  
(60 mm)



# LIGHT/SIGHTGLASS COMBINATIONS

## Series MSL-100/NW

Observing the contents in a processing vessel normally requires the use of two sightglasses; one for lighting, the other for viewing. The Series MSL-100/NW eliminates the expense of an additional port and the expense to install it. The UL-1571 Listed Series MSL lighting unit and the corresponding Series NW sightglass provide glare-free illumination precisely where you want it—at the viewing port.



Size	VOLTAGE	WATTS	A		B		C		D		E		APPROX. WEIGHT	
			Inches	MM	Inches	MM	Inches	MM	Inches	MM	Inches	MM	LBS	KGS
MSL-100/NW50	115	100	3 <sup>1</sup> / <sub>4</sub>	83	7	178	1 <sup>3</sup> / <sub>16</sub>	30	6 <sup>13</sup> / <sub>16</sub>	173	1	25	20	9
MSL-100/NW80	115	100	4	102	7 <sup>1</sup> / <sub>2</sub>	191	1 <sup>3</sup> / <sub>16</sub>	30	6 <sup>13</sup> / <sub>16</sub>	173	1 <sup>3</sup> / <sub>4</sub>	44	21	10
MSL-100/NW100	115	100	5	127	9	229	1 <sup>3</sup> / <sub>16</sub>	30	6 <sup>13</sup> / <sub>16</sub>	173	2 <sup>3</sup> / <sub>4</sub>	70	28	13
MSL-100/NW125	115	100	6	152	10	254	1 <sup>7</sup> / <sub>16</sub>	37	7 <sup>1</sup> / <sub>16</sub>	179	3 <sup>3</sup> / <sub>4</sub>	95	35	16
MSL-100/NW150	115	100	6 <sup>7</sup> / <sub>8</sub>	175	11	279	1 <sup>7</sup> / <sub>16</sub>	37	7 <sup>1</sup> / <sub>16</sub>	179	4 <sup>5</sup> / <sub>8</sub>	117	39	18
MSL-100/NW200	115	100	8 <sup>13</sup> / <sub>16</sub>	224	13 <sup>1</sup> / <sub>2</sub>	343	1 <sup>7</sup> / <sub>16</sub>	37	7 <sup>5</sup> / <sub>16</sub>	186	6 <sup>9</sup> / <sub>16</sub>	167	57	26

LIGHTING