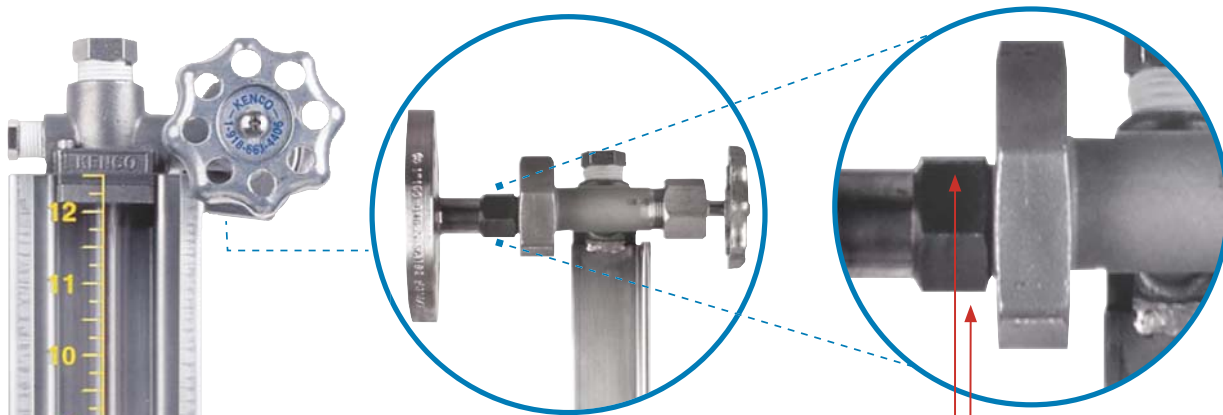
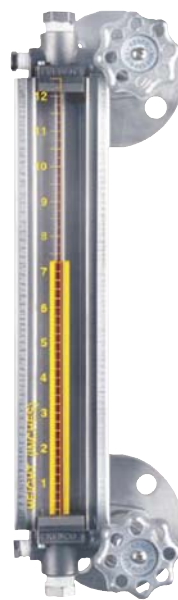


**LG2-V LEVEL GAUGE WITH INTEGRAL VALVES AND MISALIGNMENT UNIONS**



**NEW, FLOATING MISALIGNMENT UNIONS ALLOW PROCESS CONNECTION CENTERLINES TO VARY +/- 1/4"**



Series LG2-V Tank Gauge w/ Optional Flange Connection



Series LG2-V Tank Gauge w/ Integral Valve on Bottom w/ Threaded Connection on Top



Series LG2-V Tank Gauge w/ Optional Flange Connection

The patented LG2-V Series Level gauge features an innovative casting design which will simplify the installation process and eliminate other typical problems associated with gauge glasses. The LG2-V incorporates floating misalignment unions, which will allow process connection centerlines to vary +/- 1/4". The gauge also has integral offset pattern valves with ball check shutoffs. 1/2" vent and drain connections are inline for routine sight glass maintenance. The LG2-V Series Level Gauge delivers a safe, low maintenance, cost effective solution to common sight glass applications.

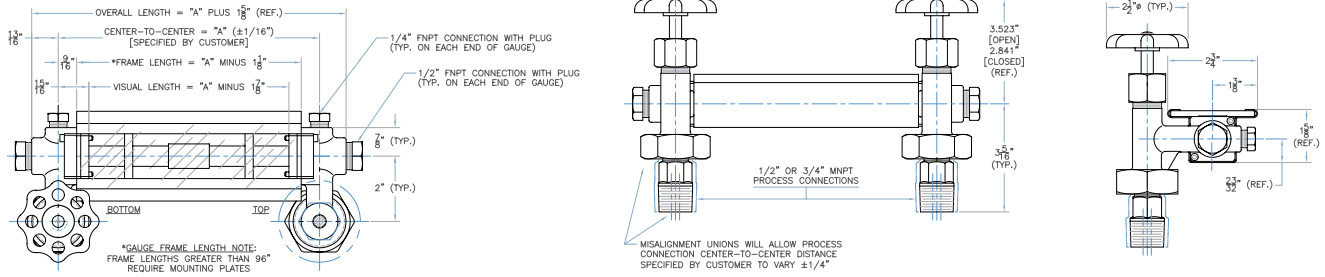
**APPLICATIONS**

- Low to Medium pressure applications up to 500 psi
- Bulk storage tanks
- Marine
- Low pressure scrubbers and surge tanks
- Seal pots

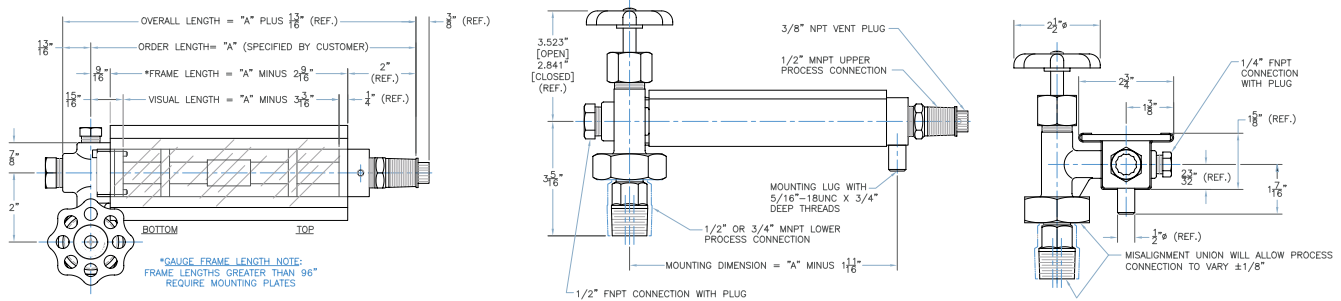
**PRODUCT FEATURES**

- Floating misalignment unions allow process connection centerlines to vary +/- 1/4"
- Offset pattern check valves with ball check shutoffs
- Ball check shutoff valves protect tank inventory
- Tubular sight glass allows for easy viewing of liquid level
- Innovative casting design includes all necessary mounting components up to process connection
- Rugged armored gauge construction protects sight glass from mechanical impact
- 1/2" vent and drain ports for routine gauge glass maintenance
- Additional 1/4" port available for optional mounting of other instrumentation for level gauge monitoring
- Custom scales for tank volume or other calibrations are available
- Armored frame and polycarbonate shield protect operator in case of accident
- ABS and DNV certified for marine applications

## LG2-V LEVEL GAURD LEVEL GAUGE



## LG2-VT BULK TANK GAUGE



## ORDERING SYSTEM

### LG2-V Series Bulk Tank Gauge

COMPANY: \_\_\_\_\_ CITY: \_\_\_\_\_ STATE: \_\_\_\_\_ ZIP: \_\_\_\_\_

REQUESTED BY: \_\_\_\_\_ PHONE: \_\_\_\_\_ FAX: \_\_\_\_\_

ADDRESS: \_\_\_\_\_ EMAIL: \_\_\_\_\_

#### Gauge Style

LG2-V = Gauge with Top & Bottom Integral Valves  
 LG2-VT = Gauge with Integral Valve on Bottom and 1/2" MNPT x 3/8" FNPT Connection on Top

#### Process Connections

M50=1/2" MNPT  
 M75=3/4" MNPT  
 FL50=1/2" Flange  
 FL75=3/4" Flange  
 FL1.0=1" Flange  
 FL1.5=1.5" Flange  
 FL2.0=2" Flange

#### Center to Center Dimension (inches)

#### Material of Construction

C=Zinc Plated Carbon Steel  
 A=Stainless Steel

#### Seal Material

V=Fluorocarbon  
 A=Aflas  
 B=Buna-N  
 T=FEP Encapsulated Silicone  
 E=Ethylene Propylene

#### Shield Options\*

L=Clear Polycarbonate  
 H=Height Scale  
 RH=Rate Height Scale  
 MH=Metric Height Scale  
 MRH=Metric Rate Height Scale  
 M=Expanded Metal Guard

#### Sight Tube Options\*

GS=5/8" O.D. Glass  
 RL=5/8" O.D. Redline Glass

#### Maximum Working Pressure (PSIG)

#### Maximum Operating Temperature (°F)

#### Steam

S=Steam Application  
 NS=Non-Steam Application

\* Based on application data provided, PAPAILIAS will select the appropriate sight tube material, i.e. high pressure glass.