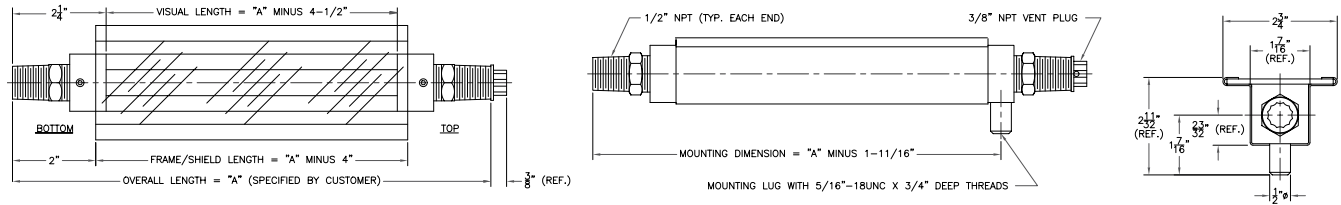
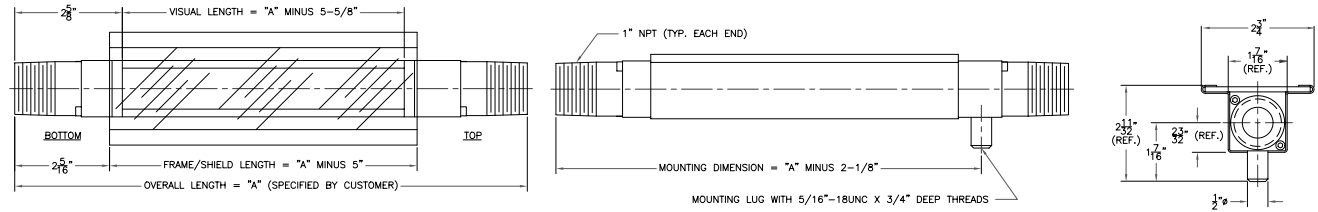


## GAUGE SPECIFICATIONS

## LG1-T-M50 (ARMORED TUBULAR LIQUID LEVEL GAUGE W. 1/2" PROCESS CONNECTIONS)



## LG1-T-M10 (ARMORED TUBULAR LIQUID LEVEL GAUGE W. 1/2" PROCESS CONNECTIONS)



### ORDERING SYSTEM LG1-T ARMORED LEVEL GAUGE

REQUESTED BY: \_\_\_\_\_ COMPANY: \_\_\_\_\_

ADDRESS: \_\_\_\_\_ CITY: \_\_\_\_\_ STATE: \_\_\_\_\_ ZIP: \_\_\_\_\_

PHONE: \_\_\_\_\_ FAX: \_\_\_\_\_ EMAIL: \_\_\_\_\_

#### Gauge Style

LG1-T-M50 = w/ 1/2"  
MNPT Connections  
LG1-T-M10 = w/ 1"  
MNPT Connections

#### Flange Option

N=None (Leave Blank)  
FL50=1/2" Flange  
FL75=3/4" Flange  
FL1.0=1" Flange  
FL1.5=1 1/2" Flange  
FL2.0=2" Flange

#### Overall Length of Gauge (Inches)

#### Material of Construction

C=Zinc Plated Carbon Steel  
A=Stainless Steel  
W=316 Stainless Steel Wetted  
Parts w/Carbon Steel Frame  
PC=PVC Wetted Parts w/Carbon  
Steel Frame  
PS=PVC Wetted Parts w/  
Stainless Steel Frame  
Other (Please Specify)

#### Seal Material

V=Fluorocarbon  
A=Aflas  
B=Buna-N  
T=(5700) PTFE  
(17000) FEP Encapsul-  
ated Silicone  
E=Ethylene Propylene

• For Flanged Models, Select  
Options C, A, PC, or PS only

#### Shield Options\*

L=Clear Polycarbonate  
H=Height Scale  
RH=Rate Height Scale  
MH=Metric Height Scale  
MRH=Metric Rate Height Scale  
M=Expanded Metal

#### Sight Tube Options\*\*

GS=5/8" O.D. Glass (5700)  
1" O.D. Glass (17000)  
RL=5/8" O.D. Redline Glass (5700)  
1" O.D.Redline Glass (17000)

#### Maximum Working Pressure (PSIG)

#### Maximum Operating Temperature (°F)

#### Steam

S=Steam Application  
NS=Non-Steam Application

• Example Order Number: LG1-T-M50-52-C-V-H-GS-ATM-200-NS

\* See page 12 for shield descriptions

\*\* Based on application data provided, the J.G. Papailias Co. will select the appropriate sight tube material, i.e. high pressure glass.



